

GENERAL NOTES

1. ALL DIMENSIONS ARE APPROXIMATE AND ARE SUBJECT TO FIELD VERIFICATION.
2. ALL DIMENSION ARE FACE OF FINISHED MASONRY WALL TO HAVE OF FINISHED MASONRY WALL- UNLESS NOTED OTHERWISE.
3. REFER TO MECHANICAL AND ELECTRICAL DRAWING SFOR DEMOLITION SCOPE.



PROFESSIONAL DESIGN GROUP, LLC
 Consulting | Design | Construction
 Phone: 770-956-7866 Fax: 770-933-0692
 2040 Franklin Way SE, Suite 2000
 Marietta, Georgia, 30067

GEORGE E. FORD
CULTURAL ARTS CENTER
 SENIOR CENTER ACTIVITY BUILDINGS
 4181 ATLANTA ST.
 POWDER SPRINGS, GEORGIA
 30127-2698

KEY NOTES

- ① REMOVE BASE CABINET, COUNTERTOP, SPLASHES AND SINK, TEMPORARILY CAP DRAIN AND SUPPLY LINES FOR RECONNECTION - REFER TO PLUMBING PLANS
- ② REMOVE DOOR, FRAME AND HARDWARE, SALVAGE ADA COMPLIANT HARDWARE INSTALLED IN PHASE 1 FOR REINSTALLATION ON REPLACEMENT DOORS - REFER TO DOOR SCHEDULE
- ③ REMOVE PLUMBING FIXTURE, TEMPORARILY CAP DRAIN AND SUPPLY LINES FOR RECONNECTION - REFER TO PLUMBING DRAWINGS
- ④ REMOVE 24"x48" RECESSED FLUORESCENT LIGHT FIXTURES. REFER TO ELECTRICAL DRAWINGS
- ⑤ REMOVE LIGHT SWITCHES AND LOWER TO 48" AFF - REFER TO ELECTRICAL DRAWINGS

LEGEND

- EFEC EXISTING FIRE EXT. CABINET
- FEC FIRE EXT. CABINET
- EXISTING DOOR/ FRAME TO REMAIN
- DEMOLITION
- EXISTING DOOR AND FRAME TO BE REMOVED



① DEMO SCALE: 1/4" = 1'-0" PHASE TWO

RENOVATE EXISTING BATHROOM WITH NEW PAINT, TILE AND ELEVATED TOUCHLESS FIXTURES

CONTRACTOR TO INSTALL FLUSH VALVES FOR TOILETS

Mark	Date	Issued	Description
1/2	1/2006	TM	FOR PERMIT

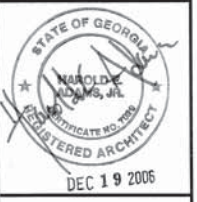
© 2006 PROFESSIONAL DESIGN GROUP, LLC
 DRAWN BY : TM
 CHK'D BY : XX
 PROJECT # : 1062701a

DEMOLITION PLAN
 BLDG. 1 PHASE TWO
ADO4

NOTICE: As an instrument of service, this Drawing is the property of the Architect and may be used only for this Project. Modifications to this Drawing may be made only by the Architect.

DEMOLITION NOTES

- ① REMOVE HVAC SYSTEM SERVING DINING AND MEETING ROOMS INCLUSIVE OF WALL-HUNG PACKAGE A/C UNITS AND GAS-FIRED UNIT HEATERS
- ② REMOVE 2-TON HEAT PUMP SERVING KITCHEN AND OFFICE AREA
- ③ REMOVE ELECTRIC WALL HEATERS
- ④ REMOVE TOILET AND LAVATORY - REFER TO PLUMBING DRAWINGS
- ⑤ REMOVE DRINKING FOUNTAIN, TEMPORARILY CAP DRAIN AND SUPPLY LINES FOR RECONNECTION - REFER TO PLUMBING DRAWINGS
- ⑥ REMOVE SURFACE-MOUNTED FLUORESCENT LIGHT FIXTURES- REFER TO ELECTRICAL DWGS.
- ⑦ REMOVE LIGHT SWITCHES AND LOWER TO 48" AFF - REFER TO ELECTRICAL DRAWINGS
- ⑧ REMOVE ALL ELECTRICAL ELEMENTS SERVING HVAC UNITS INCLUDING, BUT NOT LIMITED TO, WIRE, CONDUIT AND SWITCHES - REFER TO ELECTRICAL DRAWINGS



PROFESSIONAL DESIGN GROUP, LLC
 Consulting | Design | Construction
 Phone: 770.956.7866 Fax: 770.933.0692
 2040 Franklin Way SE, Suite 2000
 Marietta, Georgia, 30067

GEORGE E. FORD
 CULTURAL ARTS CENTER
 SENIOR CENTER ACTIVITY BUILDINGS
 4181 ATLANTA ST.
 POWDER SPRINGS, GEORGIA
 30127-2698

Mark	Date Issued	Description
XX-XX-XX	XX	XXXXXXXXXXXXXXXXXXXX

© 2008 PROFESSIONAL DESIGN GROUP, LLC
 DRAWN BY : TM
 CHK'D BY : XX
 PROJECT # : 1062701

DEMOLITION PLAN
 BLDG. 2 PHASE TWO

AD05

LEGEND

- EXISTING DOOR/ FRAME TO REMAIN
- DEMOLITION
- EXISTING DOOR AND FRAME TO BE REMOVED



RENOVATE EXISTING BATHROOM WITH NEW PAINT, TILE AND ELEVATED TOUCHLESS FIXTURES

RENOVATE EXISTING BATHROOM WITH NEW PAINT, TILE AND ELEVATED TOUCHLESS FIXTURES

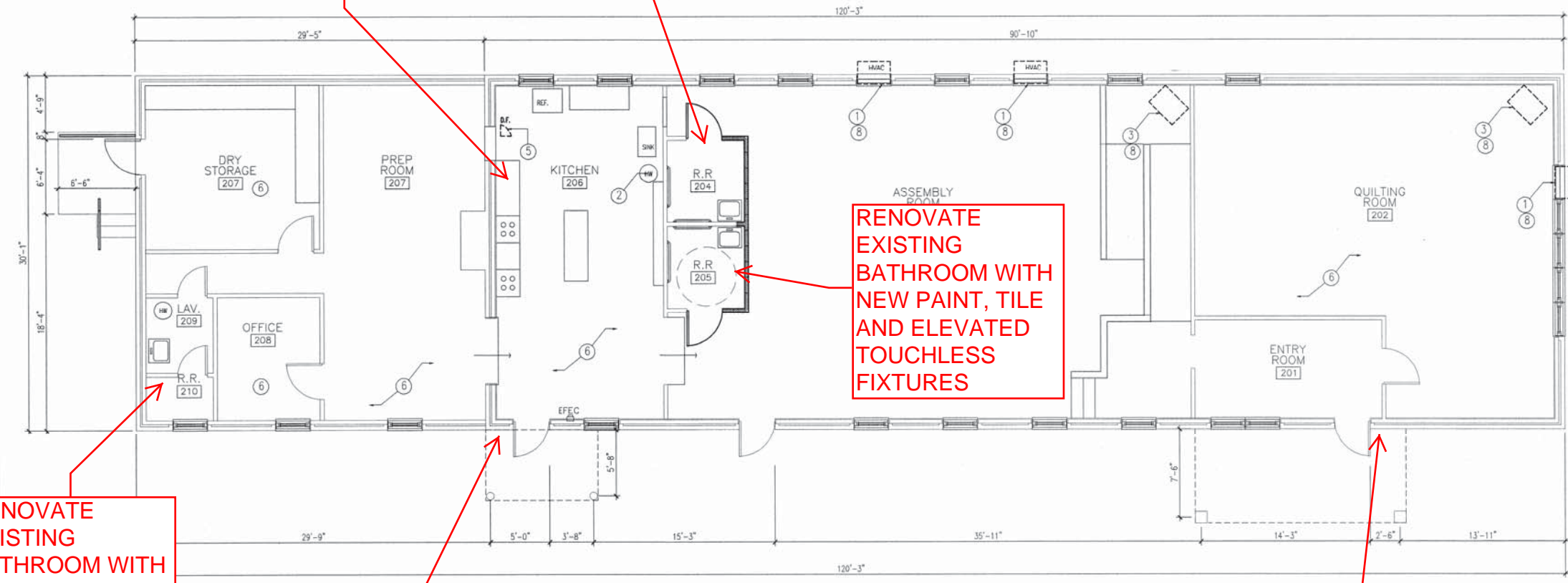
INSTALL NEW OVEN

RENOVATE EXISTING BATHROOM WITH TOUCHLESS ELEVATED FIXTURES

INSTALL ADA DOOR OPENER AND ACCESS CONTROL

INSTALL ADA DOOR OPENER AND ACCESS CONTROL

CONTRACTOR TO INSTALL FLUSH VALVES FOR TOILETS



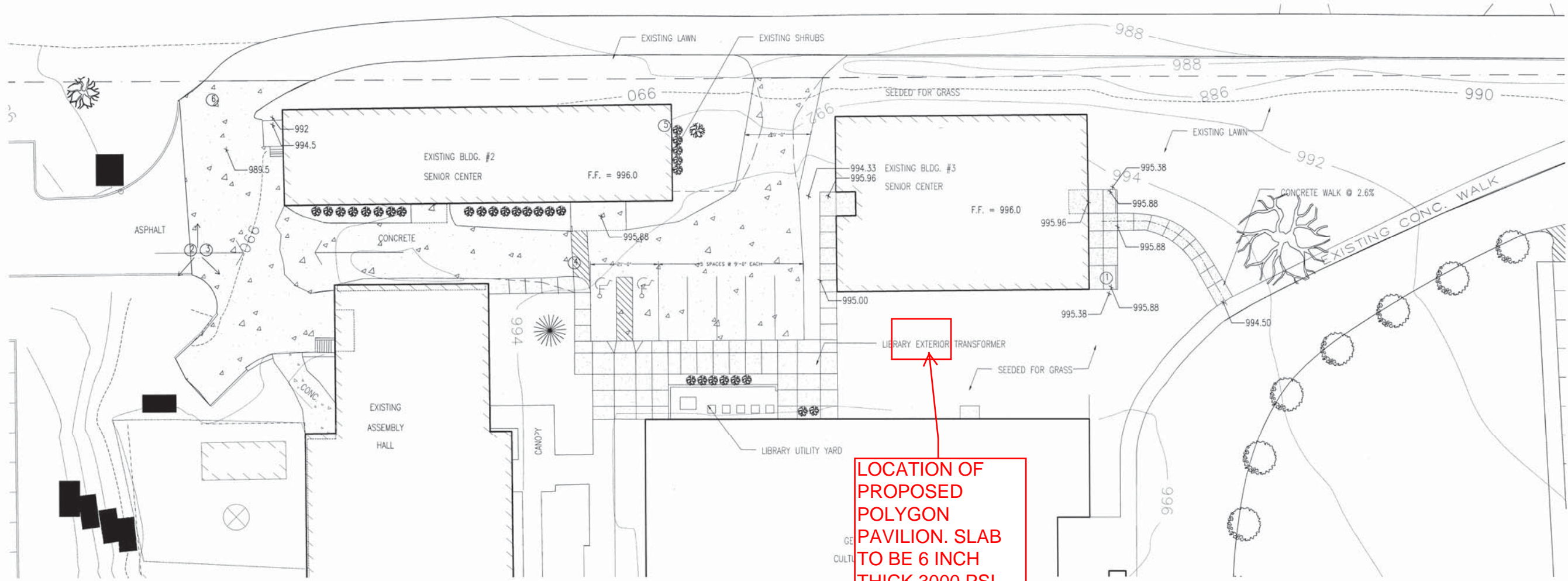
DEMOLITION PLAN: BLDG. 2 PHASE TWO
 SCALE: 3/16" = 1'-0"

NOTICE: As an instrument of service, this Drawing is the property of the Architect and may be used only for this Project. Modifications to this Drawing may be made only by the Architect.



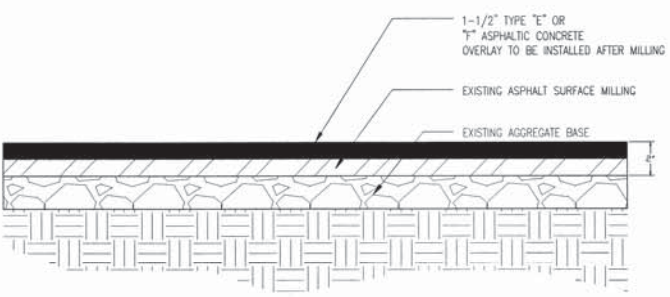
PROFESSIONAL DESIGN GROUP, LLC
Consulting | Design | Construction
Phone: 770.954.7886 Fax: 770.933.0692
2040 Franklin Way SE, Suite 2000
Marietta, Georgia, 30067

GEORGE E. FORD
CULTURAL ARTS CENTER
SENIOR CENTER ACTIVITY BUILDINGS
4181 ATLANTA ST.
POWDER SPRINGS, GEORGIA
30127-2698



**LOCATION OF
PROPOSED
POLYGON
PAVILION. SLAB
TO BE 6 INCH
THICK 3000 PSI
WITH FIBER**

1 ARCHITECTURAL SITE PLAN
SCALE: 1/16" = 1'-0"



2 MILLING/ OVERLAY PAVING SECTION
SCALE: N.T.S.

NOTE:
EXISTING ASPHALT PARKING LOT TO BE
MILLED TO A DEPTH OF 1-1/2" MINIMUM AND
RESURFACED WITH 1-1/2" ASPHALTIC
CONCRETE TYPE 'E' UPON COMPLETION OF
MILLING. THE MILLED SURFACE SHALL BE
INSPECTED BY THE OWNER'S ON-SITE
CIVIL/MECHANICAL ENGINEER
FOR ACCURACY AND ANY AREAS THAT MAY
NEED TO BE CUT OUT DUE TO STRUCTURAL
FAILURE, BEFORE ANY RESURFACING CAN
BEGIN.
SEE BID FORM FOR ALLOWANCE TO BE
INCLUDED IN BASE BID.

NOTE: ALL DIMENSIONS ARE APPROXIMATE AND MUST BE FIELD VERIFIED.

DEMOLITION NOTES

- 1 SAWCUT AND REMOVE CONCRETE SIDE WALK.
- 2 MILL EXISTING ASPHALT
- 3 RESURFACE WITH 1 1/2" TYPE "E" OR "F" ASPHALTIC CONCRETE.
- 4 RESURFACE EXISTING CONCRETE PAVEMENT WITH 1 1/2" ASPHALTIC CONCRETE
- 5 WIDEN EXISTING DRIVE AS NOTED
- 6 REGRADE TO 30" BELOW FINISHED CONCRETE FLOOR



Mark	Date	Issued	Description
1/2	10/06	TM	FOR PERMIT

© 2009 PROFESSIONAL DESIGN GROUP, LLC
DRAWN BY : TM
CHKD BY : XX
PROJECT # : 1062701a

ARCHITECTURAL SITE PLAN

A101